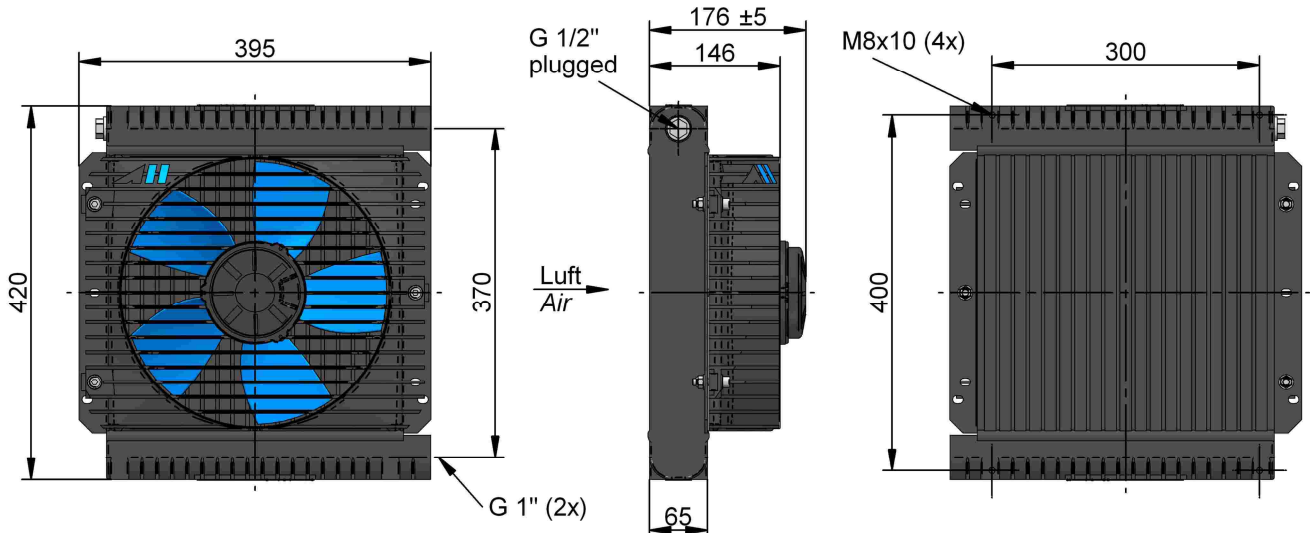
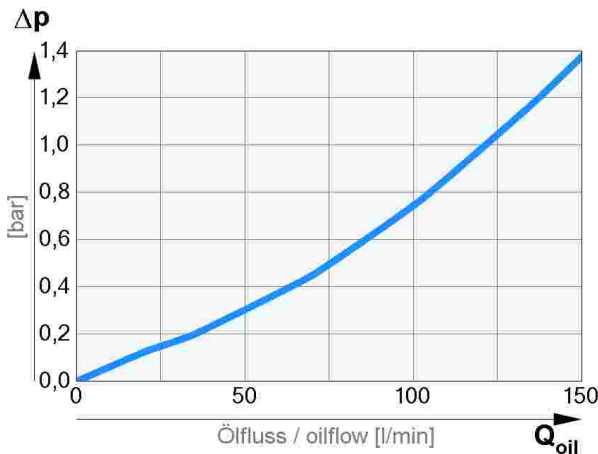


Oil / Air cooler ASA-TT 11 12V/24V DC Öl / Luftkühler ASA-TT 11 12V/24V DC



Pressure drop at 30 cst
Druckabfall bei 30 cst



Specific Cooling Performance
Spezifische Kühlleistung



TECHNICAL DATA

order number	description	power	current	protection	air flow	noise level	weight
Bestellnummer	Bezeichnung	Motorleistung	Stromaufnahme	Schutzart	Luftdurchsatz	Schallpegel	Gewicht
		[kW]	[A]		[kg/s]	[dB(A)]	[kg]
ASATT11GD01	ASA-TT 11 12V DC	0,25	19,4	IP 68	0,67	80	10,4
ASATT11GD02	ASA-TT 11 24V DC	0,25	9,7	IP 68	0,67	80	10,4

working pressure:
radiator material

26 bar
Aluminium

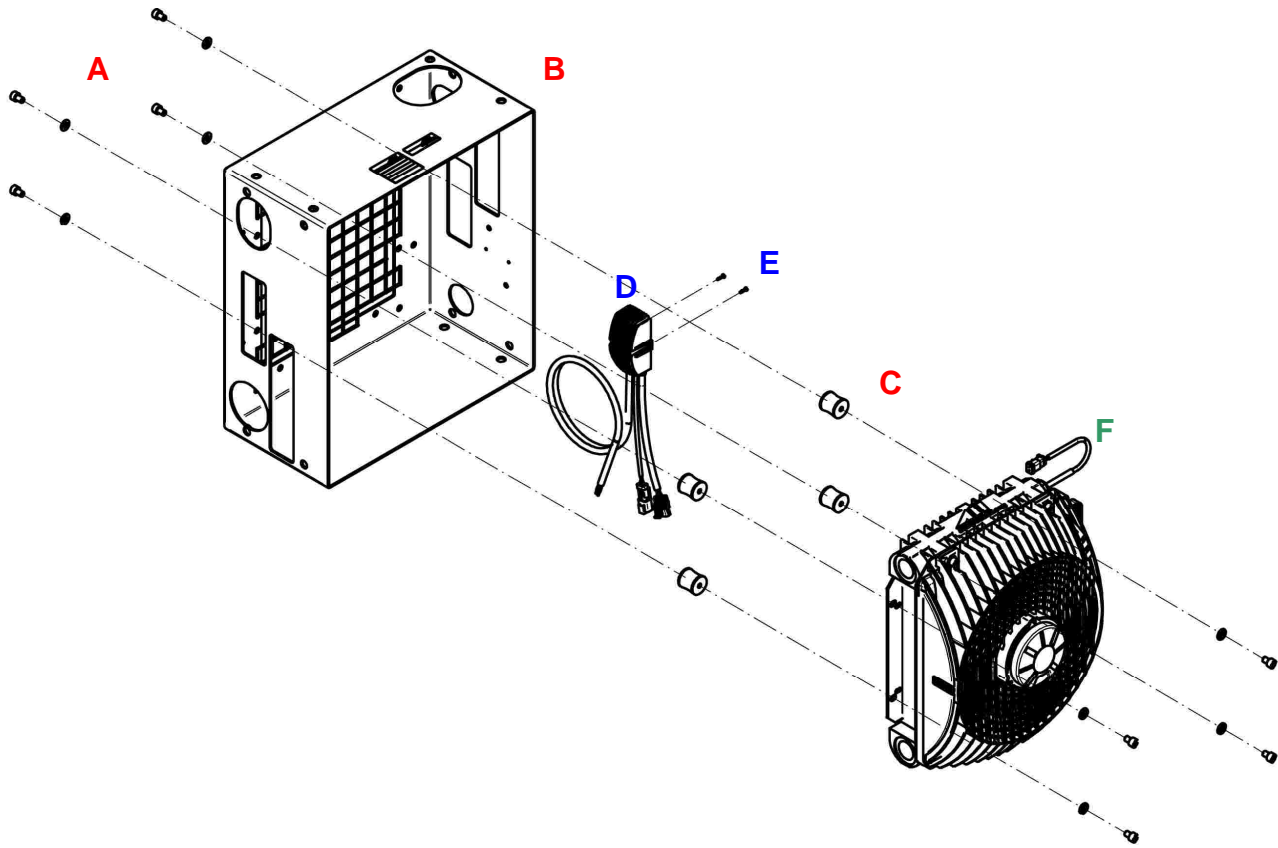
Betriebsdruck
Material Kühlelement

This data sheet shows a technical overview of our products. Please contact us, if more exact information is needed. As we are constantly improving our products, the characteristics, dimensions and weights can also change, although we do our best to incorporate these changes continually. The information in this data sheet is intended to be used as a guideline only. ASA assumes no liability for any errors, omissions or misprints. The cooling performance and the general technical values mentioned in this data sheet are measured at a test bench according to ASA test procedures and present a base for your cooler selection regarding required cooling performance. Therefore we recommend all coolers be checked under the system operating conditions. This is also true for vibrations and mechanical stress as well as for pressure peaks and thermal stress.

Das Datenblatt stellt einen technischen Überblick dar. Für den genauen Anwendungsfall kontaktieren Sie bitte unsere Techniker. Wir versuchen die technischen Daten immer am letzten Stand zu halten, aber durch die ständige Weiterentwicklung kann für die Richtigkeit der Angaben (sowie Druckfehler) keine Gewähr gegeben werden. Die in diesem Datenblatt angeführten Kühlleistungen und allgemeinen technischen Angaben wurden am Prüfstand nach dem ASA Messverfahren ermittelt und stellen eine Basis für Ihre Kühlerauswahl hinsichtlich der abzuführenden Wärmemenge dar. Wir empfehlen daher unbedingt den entsprechenden Kühler unter den jeweils vorliegenden praxisnahen Einsatzbedingungen zu testen. Ebenso sollte die Kühlerfunktion hinsichtlich Schwingungs- und Festigkeitsbeanspruchungen, sowie für wechselnde Druckbelastungen und Thermospannungen überprüft werden.

Accessories ASA-TT Series

Zubehör ASA-TT Serie



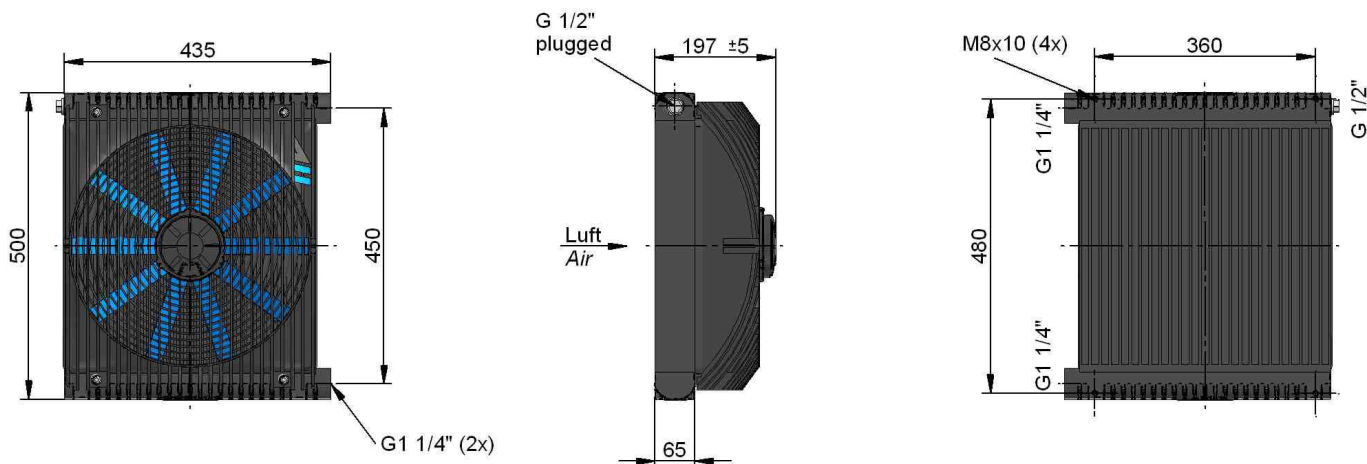
Combination table		Kombinationen					
Type/Accessories	ILLEGAK0075GT	ILLEGAK0165GT	ILLZTC12K	ILLZTC24K	ILLZKL29K	ILLZTT5067K	ILLZTH4767K
Positionen/positions	A, B, C	A, B, C	D, E	D, E	D, E	F	F
ASATT07GD01	●	-	●	-	-	●	●
ASATT07GD02	●	-	-	●	●	●	●
ASATT11GD01	●	-	●	-	-	●	●
ASATT11GD02	●	-	-	●	●	●	●
ASATT16GD01	-	●	●	-	-	●	●
ASATT16GD02	-	●	-	●	●	●	●
ASATT25GD01	-	-	●	-	-	●	●
ASATT25GD02	-	-	-	●	●	●	●
ASATT30GD01	-	-	-	-	-	-	●
ASATT30GD02	-	-	-	-	-	-	●

The protection housing kits ILLEGAK0075GT and ILLEGAK0165GT will be done with mounting kit SERV, only.

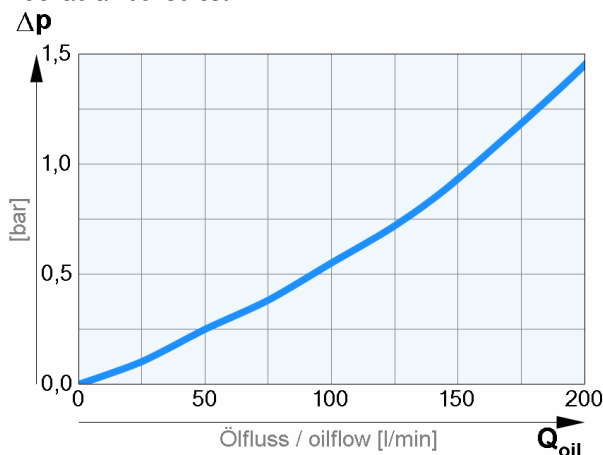
Die Schutzgehäuse- Kits ILLEGAK0075GT und ILLEGAK0165GT werden nur zusammen mit dem Montage- Kit SERV geliefert.



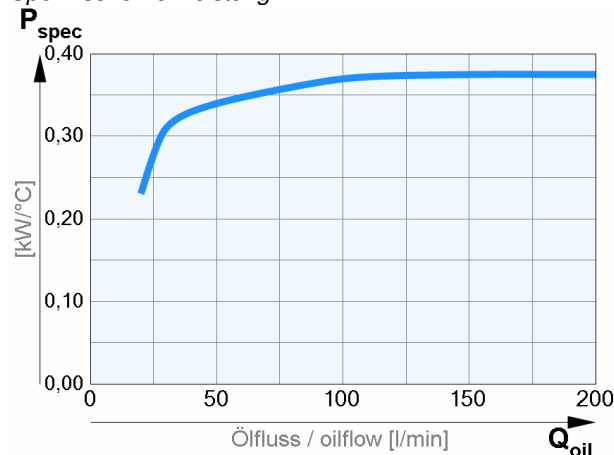
Oil / Air cooler ASA-TT 16 12V/24V DC Öl / Luftkühler ASA-TT 16 12V/24V DC



Pressure drop at 30 cst
Druckabfall bei 30 cst



Specific Cooling Performance
Spezifische Kühlleistung



TECHNICAL DATA

order number	description	power	current	protection	air flow	noise level	weight
Bestellnummer	Bezeichnung	Motorleistung	Stromaufnahme	Schutzart	Luftdurchsatz	Schallpegel	Gewicht
		[kW]	[A]		[kg/s]	[dB(A)]	[kg]
ASATT16GD01	ASA-TT 16 12V DC	0,23	17,4	IP 68	0,90	79	16,5
ASATT16GD02	ASA-TT 16 24V DC	0,23	8,7	IP 68	0,90	79	16,5

TECHNISCHE DATEN

working pressure:
radiator material

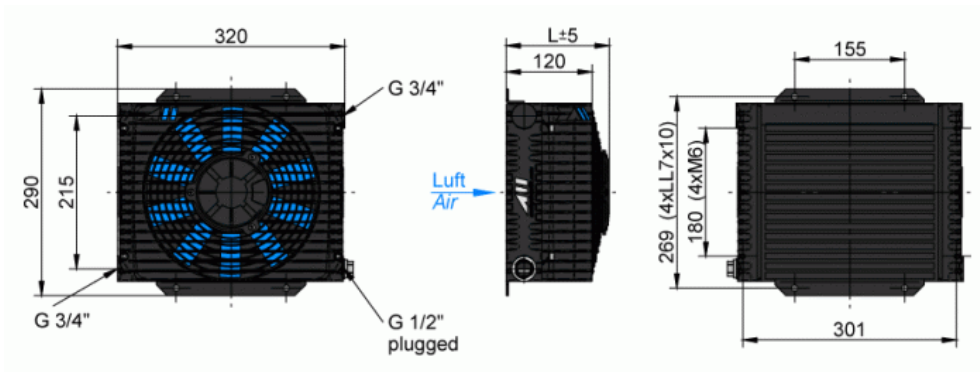
26 bar
Aluminium

Betriebsdruck
Material Kühlelement

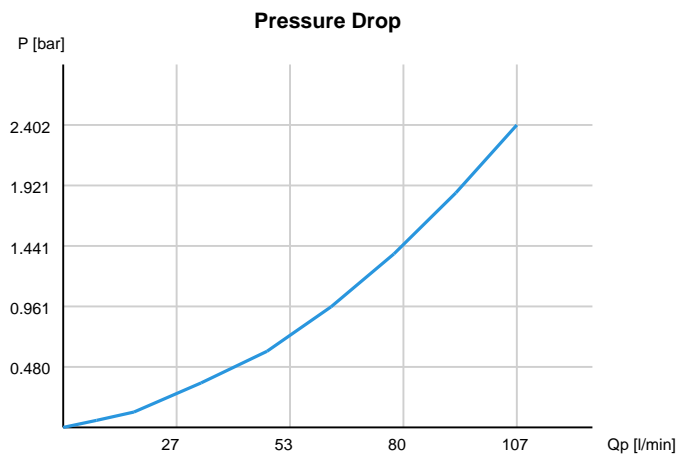
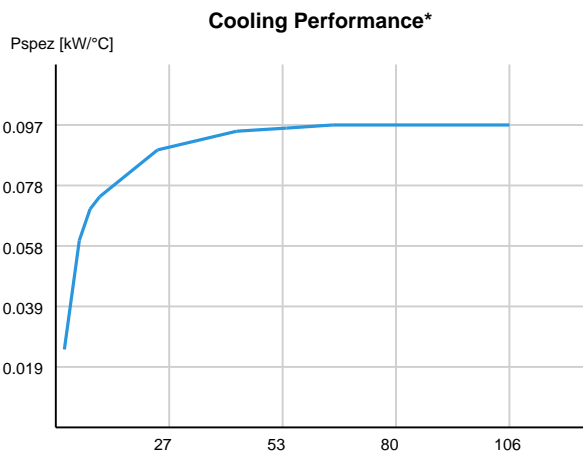
This data sheet shows a technical overview of our products. Please contact us, if more exact information is needed. As we are constantly improving our products, the characteristics, dimensions and weights can also change, although we do our best to incorporate these changes continually. The information in this data sheet is intended to be used as a guideline only. ASA assumes no liability for any errors, omissions or misprints. The cooling performance and the general technical values mentioned in this data sheet are measured at a test bench according to ASA test procedures and present a base for your cooler selection regarding required cooling performance. Therefore we recommend all coolers be checked under the system operating conditions. This is also true for vibrations and mechanical stress as well as for pressure peaks and thermal stress.

Das Datenblatt stellt einen technischen Überblick dar. Für den genauen Anwendungsfall kontaktieren Sie bitte unsere Techniker. Wir versuchen die technischen Daten immer am letzten Stand zu halten, aber durch die ständige Weiterentwicklung kann für die Richtigkeit der Angaben (sowie Druckfehler) keine Gewähr gegeben werden. Die in diesem Datenblatt angeführten Kühlleistungen und allgemeinen technischen Angaben wurden am Prüfstand nach dem ASA Messverfahren ermittelt und stellen eine Basis für Ihre Kühlerauswahl hinsichtlich der abzuführenden Wärmemenge dar. Wir empfehlen daher unbedingt den entsprechenden Kühler unter den jeweils vorliegenden praxisnahen Einsatzbedingungen zu testen. Ebenso sollte die Kühlerfunktion hinsichtlich Schwingungs- und Festigkeitsbeanspruchungen, sowie für wechselnde Druckbelastungen und Thermospannungen überprüft werden.

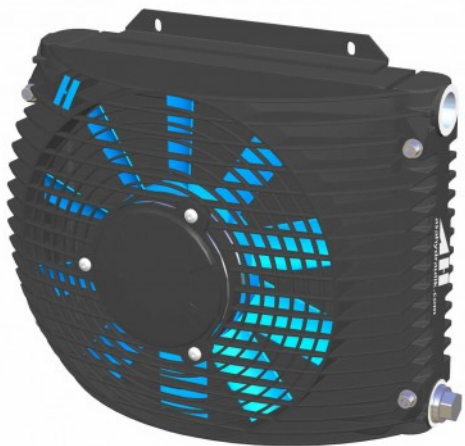
TT 06 24V DC (0.086 kW)



A:	-	J:	-
B:	-	K:	-
C:	-	L:	146 mm
D:	-	N:	-
G:	-	W:	-



Order Number	Motor Power	Current	Protection Level	Rotation	Air Flow	Noise Level	Weight
ASATT06GD02	0.086 kW	3.3 A	68	2600 1/min	0.27 kg/s	70 db(A)	5.5 kg



***Note – Cooling Performance**

The cooling performance mentioned in this homepage is conservative and measured at a test bench according to asa test procedures with oil type ISO VG 46 and presents a bases for your cooler selection regarding required cooling performance. Because there is no standard test procedure, tests used by other manufacturers might have different results. Due to different environment conditions the cooling performance can vary by +/- 15%.

Therefore we recommend all coolers be checked under the system operating conditions. This is also true for vibrations and mechanical stress as well as for pressure peaks and thermal stress.

General tolerance according to DIN 2768-g.

The information contained in this homepage is intended to be used as a guideline only. Customers should always confirm the suitability of the information and these products in their particular applications. ASA assumes no liability for any errors, commissions or misprints and reserves the right to change products and details without prior notification. As we are constantly improving our products, the characteristics, dimensions and weights can also change, although we do our best to incorporate these changes continually.

asa hydraulik GmbH
Prager Strasse 280
A-1210 Wien, Austria, Europe

Tel.: ++43 / 1 / 292 40 20
Fax: ++43 / 1 / 292 40 70

support@asahydraulik.com
www.asahydraulik.com